

POLOVETSER DANS

Bas

uit opera PRINS IGOR

A. P. Borodin

Andantino $\text{♩} = 84$ **A** *Sempre legato e dolce* **B**

14 16 15

Allegro vivo $\text{♩} = 152$ **C** **D**

46 18 16 11

91 **Allegro** $\text{♩} = 69$ **f**

99 **ff** *dim.* **f** Poj - tje pje - sni sla - wy cha - noe!

107 **ff** *dim.* **p** Poj! Slav'-tje si - loe, do - blist' cha - na!

113 **f** **p** **f** Slav'! Sla - wjen chan!

119 **f** **ff** *dim.* Chan! Sla - wjen on, chan nasj!

127 **f** **ff** *dim.* Blje - skom sla - wy son - tsoe ra - wjen chan!

Nje - toe ra - wnych sla - woj cha - noe! Njet!

E 36

F **f** **ff** *dim.* Poj - tje pje - sni sla - wy cha - noe! Poj!

179 *f* *ff* *dim.*

Slav'-tje sje-drast', slav'-tje mi-last!! Slav!_____

186 *mf* *ff* *mf* *ff*

— Dlja wra - gov — chan, — gro-zen on, — chan

194 *f* *ff* *dim.*

nasj! Kto zhje sla-woj ra-wjen cha-noe, kto?_____

202 *f* *ff* *dim.*

— Blje-skom sla-wy son-tsoe ra-wjen on!_____

210

G **8** **H** **14** **6**

I **Presto** $\text{♩} = 100$ **J** **11** **23**

K *f*

Sla - - - woj — dje - - - dam —

275

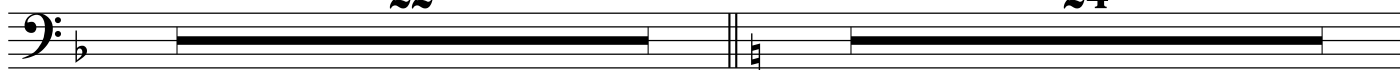
ra - - - wjen — chan — nasj

283 **L**

chan, — chan —

291

Kan - - - tsjak!_____

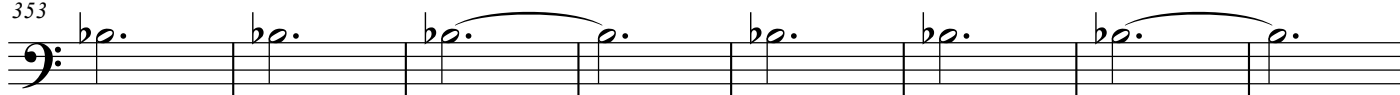


N



Sla - wjen chan, chan Kan - tsjak!

353



Sla - wjen chan, chan Kan - tsjak!

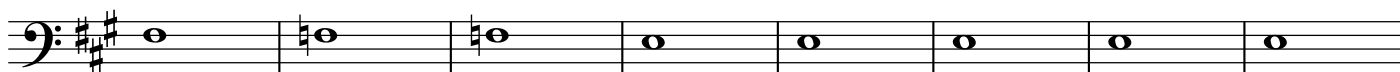
361

8

O

Moderato alla breve $\text{♩} = 100$ 

384



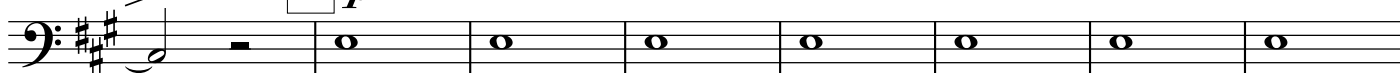
W kraj gdje pad znoj - nym nje - bam joe -

392



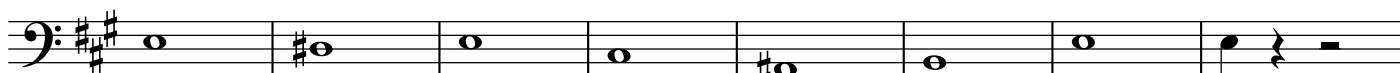
ga drje - mljoet go - ry wa - bla - kach;

400

P *p*

— Tam tak ja - rka son - tse swje -

408



tit ro - za tam w sa - dach tswje - tjot,

416

13



Ty oe - lje - taj.

Q

Presto $\text{♩} = 100$

36

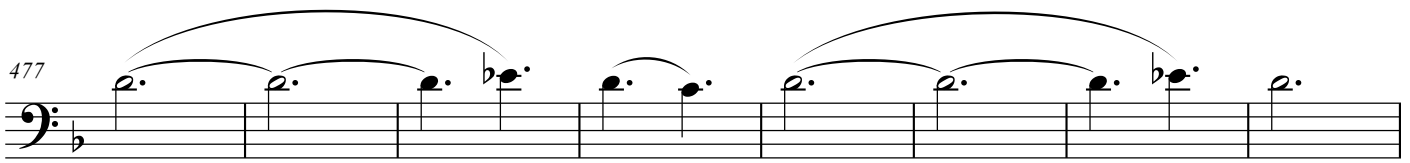


R



Sla - - - woj - - - dje - - - dam -

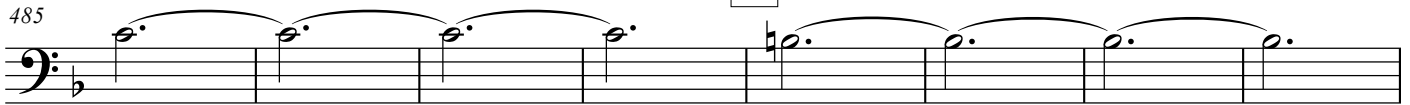
477



ra - - - wjen chan nasj

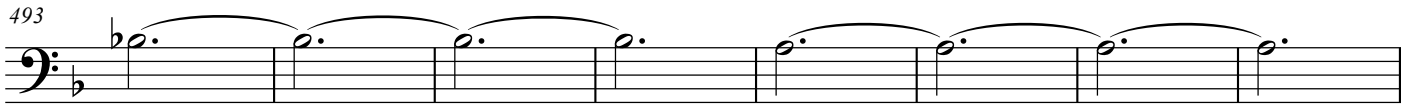
S

485



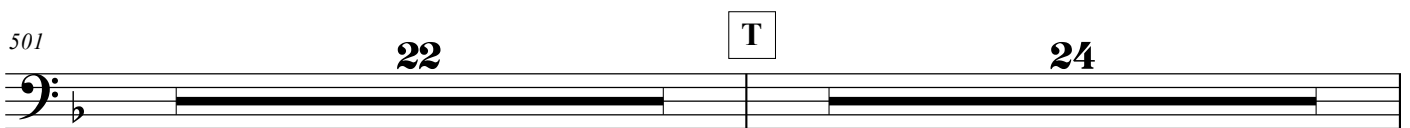
chan, chan

493



Kan - - - tsjak!

501



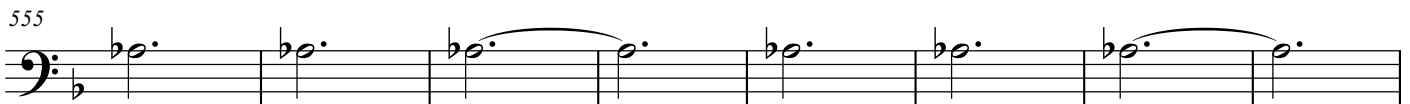
T

U



Sla - wjen chan, chan Kan - tsjak!

555



Sla - wjen chan, chan Kan - tsjak!

563



V

Allegro con spirito ♩ = 152

579



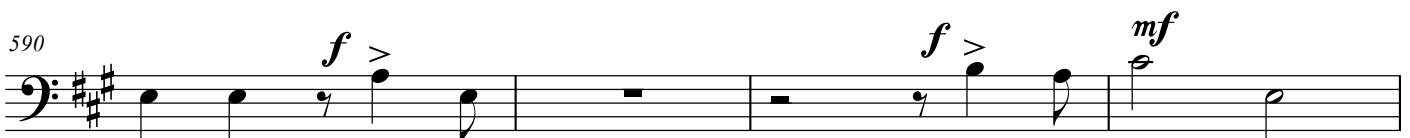
Plja - skaj wa - sje' tje - sjtje cha - na

W



Plja - skaj tje - sjtje cha - na tsja - gi! Plja - skaj tje - sjtje

590



cha - na tsja - gi! tsja - gi! cha - na

594

X

swa - je - wo tsja - gi!

598

tsja - gi! Plja - skaj tje - sjtje

601

cha - na tsja - gi! cha - na swa - je - wo

605

Y

swa - je - wo Plja - skaj wa - sje'

611

tje - sjtje cha - na Plja -

616

Z

skaj tjesj - te! Nasj chan Kan - tsjak!

622

625

Nasj chan _____ Kan - tsjak! _____